



R Series
SLIDING DOOR FOR RESTROOMS AND SHOWERS
Opening Doors to Infinite Possibilities

LISUS latest Product for 2010 PCT/SG2009/000449



R SERIES

LISUS reinvents the way doors will be opened with the revolutionary space saving sliding door system specifically designed for toilet and shower cubicles.

This unparalleled system is set to pave the aesthetics and functionality of cubicle spaces through an efficient layout, which provides comfortable user ergonomics and better security policies to meet the needs of our modern society.



Key Features

CONVENIENT

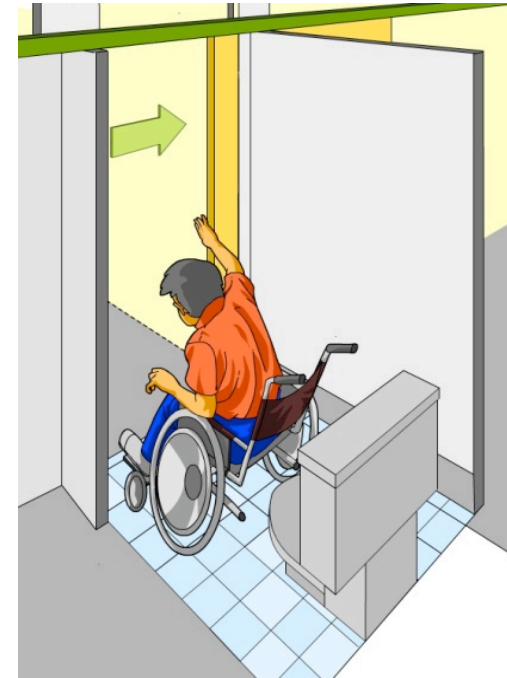
By reducing the need to snake around hinged doors and the risk of getting caught in between the spring reflex of swing doors, movement is facilitated with a straight path to enter and exit the cubicle easily.



Ease of Movement



User Friendly

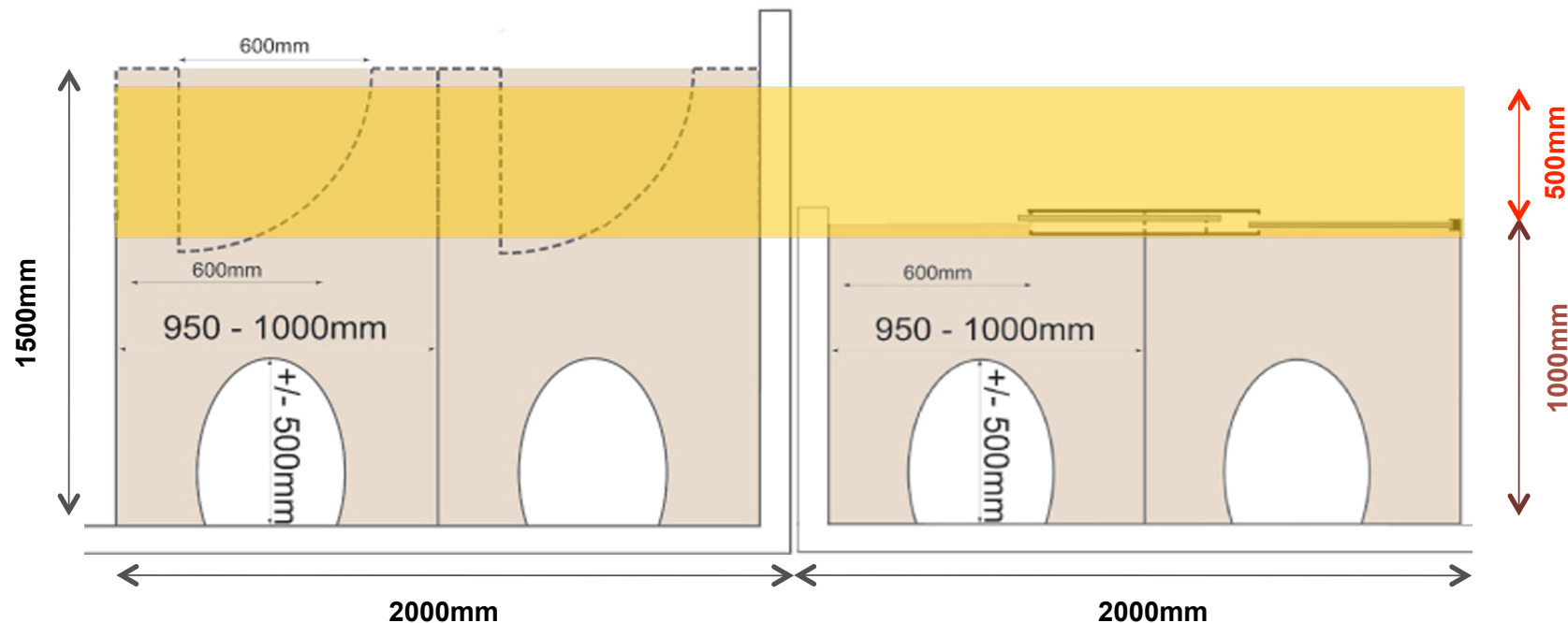


Easy Access

Key Features

SPACE SAVING

With up to 50% of saved space from the system's innovative design, more cubicles can be creatively configured into the layout to maximize the usage of space.



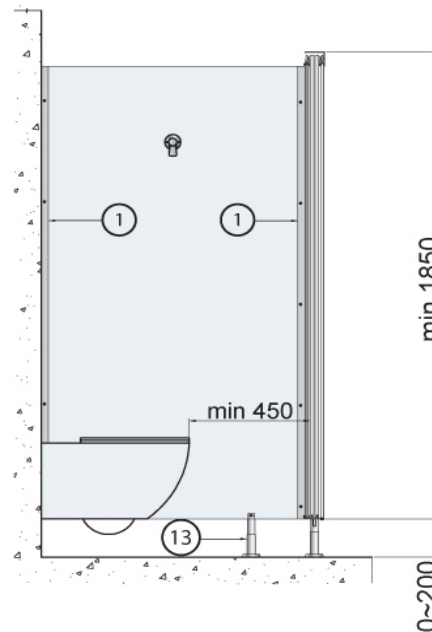
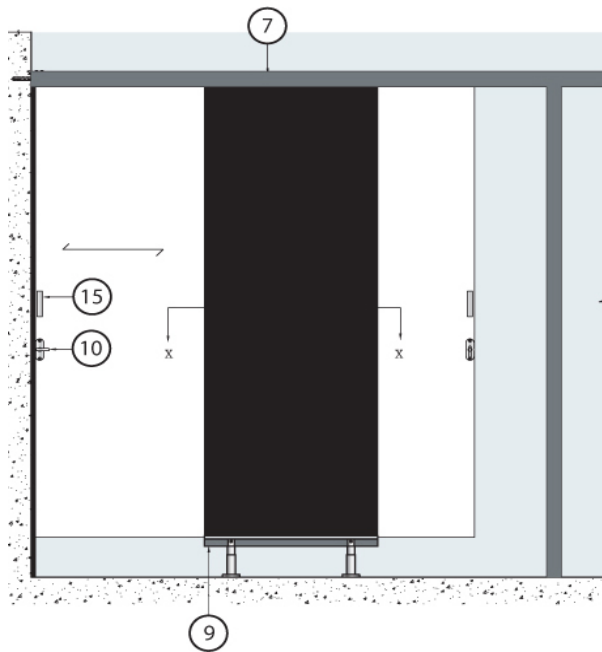
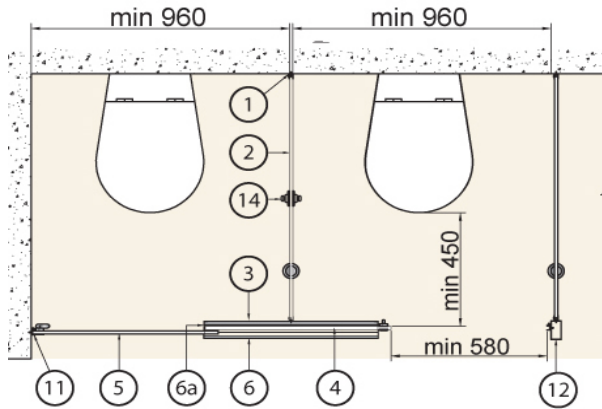
SECURITY

With users leaving the cubicle doors open after use, routine checks by security personnel can be performed with ease, thus ensuring a safer environment for everyone.

R SERIES – HANDBOOK

SLIDING DOORS FOR RESTROOMS & SHOWERS

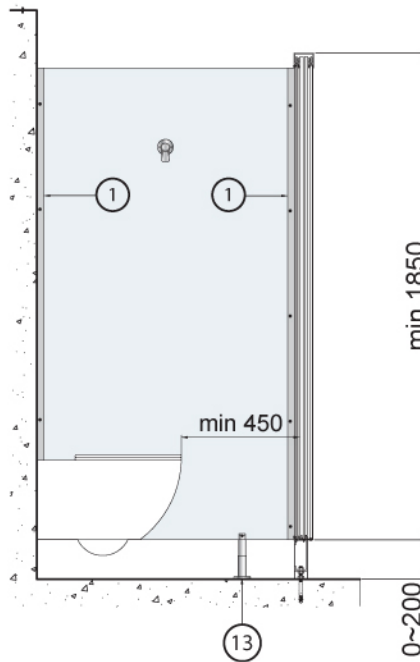
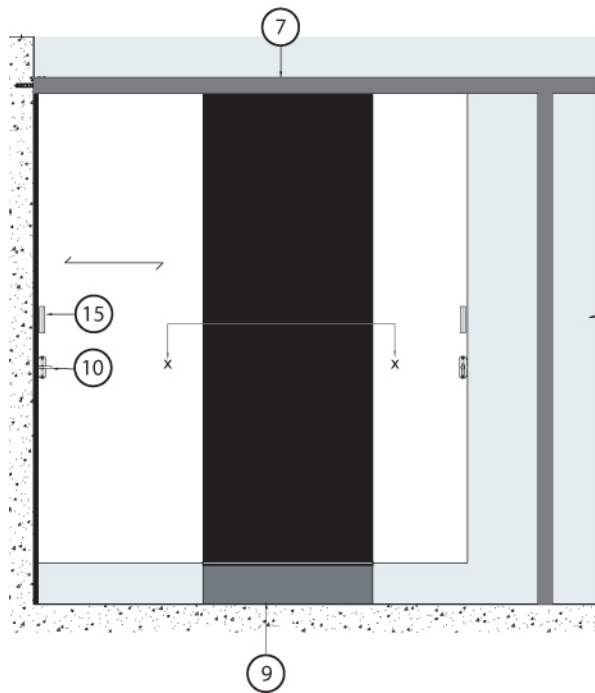
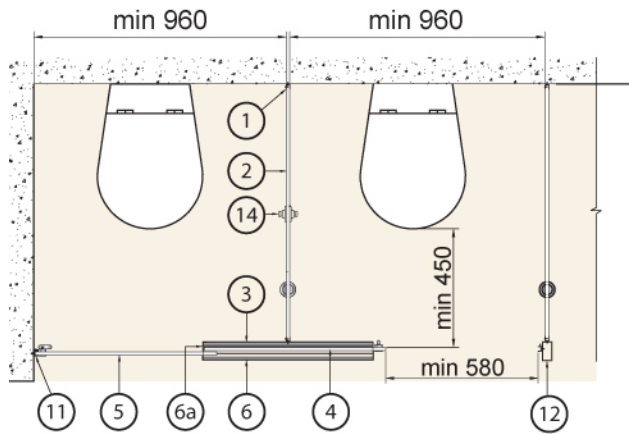
Details of R Series (With



DESCRIPTION

- 01 Aluminium Channel
- 02 Divider
- 03 Fixed Panel
- 04 Inner Door
- 05 Outer Door
- 06 Aluminium/Glass Panel
- 6A Aluminium Angle
- 07 Top Guide Rail
- 08 Aluminium Gap Cover
- 09 Bottom Rail
- 10 Lock
- 11 Door Seal
- 12 Divider Post (Optional)
- 13 Adjustable Leg
- 14 Hanger
- 15 Door Handle (Optional)

Details of R Series (Without Leg)



DESCRIPTION

- 01 Aluminium Channel
- 02 Divider
- 03 Fixed Panel
- 04 Inner Door
- 05 Outer Door
- 06 Aluminium/Glass Panel
- 6A Aluminium Angle
- 07 Top Guide Rail
- 08 Aluminium Gap Cover
- 09 Bottom Rail (**Stainless Steel Cover**)
- 10 Lock
- 11 Door Seal
- 12 Divider Post (Optional)
- 13 Adjustable Leg
- 14 Hanger
- 15 Door Handle (Optional)

High Density Phenolic Core Boards (HPL)

Phenolic board is a high density water resistant phenolic core board with melamine finish on both sides. The paper layers are impregnated with phenol and melamine resins and then compressed under heat. This surface material offers qualities of durability, water and scratch resistance, easy maintenance qualities that are keys to any good toilet cubicle system in a demanding environment.

CHARACTERISTIC AND PROPERTIES

- Good machinability
- Heat and wear resistant
- Resists corrosion and chemicals
- Low moisture absorption
- water and scratch resistance
- Good mechanical strength & dimensional stability



Product Application

